



CALIBREO

HIGH-QUALITY &
RELIABLE IN-FLIGHT
CALIBRATION

IN-FLIGHT CALIBRATION TO SHARPEN UP YOUR MISSION

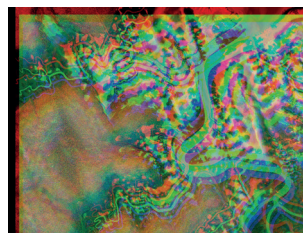
In-flight calibration is essential to guarantee high quality Earth observation data. CALIBREO is a unique calibration service for SmallSats and Cubesats.

CALIBREO ensures your optical satellite instruments remain well calibrated during the entire mission. To keep pace with all sources impacting your data quality, we bring in specialized expertise and advanced methods to reach optimized accuracy.

RELIABLE CALIBRATION SERVICES

VITO Remote Sensing offers a tailored service to meet your requirements. For each of the image quality parameters (radiometric, spectral and geometric) we employ state-of-the-art algorithms adapted to your data and imaging constraints.

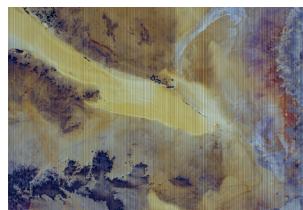
The level of calibration service and frequency is fully customizable to fit your needs, going from a periodic check of the calibration and image quality to a full in-depth calibration during commissioning.



before calibration



after calibration



before calibration



after calibration

IMPROVED DATA QUALITY

HARMONIZED AND CONSISTENT DATA

ENHANCED SERVICE CAPABILITIES

HIGHER VALUE PRODUCTS

SHORTER TIME-TO MARKET

REDUCED COSTS

@VITO_RS_ 

vito-remote-sensing 

blog.vito.be/remotesensing

remotesensing.vito.be

TAILORED SERVICES TO MEET YOUR REQUIREMENTS

We offer three levels of calibration services at a competitive price. The service supports both line and frame sensors. Contact us to request a custom and detailed offer to sharpen up your mission.



ENTRY-LEVEL QUALITY VERIFICATION



VERIFICATION OF GEOMETRIC AND RADIOMETRIC ACCURACY

RADIOMETRY

- + Absolute radiometric accuracy check
- + Evaluation of SNR
- + Expert evaluation (anomalies, artefacts,...)

GEOMETRY

- + Absolute geolocation check
- + Band to Band co-registration check
- + MTF analysis
- + Expert evaluation (anomalies, artefacts,...)

EXPRESS DATA CALIBRATION



ACHIEVE INDUSTRY-STANDARD ACCURACY IN A SHORT TIME

RADIOMETRY

- + Absolute radiometric calibration
- + Evaluation of SNR
- + Dark current calibration
- + Interpixel calibration
- + Spectral calibration verification

GEOMETRY

- + Absolute geolocation correction
- + Refinement of satellite Line of sight
- + RPC model bias correction
- + Band to Band co-registration

PREMIUM DATA CALIBRATION



ACHIEVE AND MAINTAIN OPTIMAL ACCURACY OVER A MISSION LIFETIME

RADIOMETRY

- + Absolute radiometric calibration
- + Evaluation of SNR
- + Dark current calibration
- + Interpixel calibration
- + Spectral calibration
- + Multi-temporal stability monitoring
- + Cross-calibration of the constellation

GEOMETRY

- + Absolute geolocation correction
- + Refinement of satellite Line of sight
- + RPC model bias correction
- + Band to Band co-registration
- + Correction of satellite attitude data



More info

remotesensing.vito.be/services/calibreo
blog.vito.be/remotesensing
remotesensing.vito.be

END-TO-END SOLUTION

We can also provide a complete end to end processing Earth Observation data pipeline (Level0, 1A, 1B, 1C and L2A) including a customised premium calibration..